

# UPG Sealed Lead-Acid Battery

STAY POWERED™

Absorbant Glass Mat (AGM) technology for superior performance. Valve regulated, spill proof construction allows safe operation in any position. Approved for transport by air. D.O.T., I.A.T.A., F.A.A. and C.A.B. certified. U.L. recognized under file number MH 20567.

UPG No. 45968

## UBGC8

Maintenance-Free

### Specification

<b>Nominal Voltage</b>	8 volts		
<b>Nominal Capacity</b>	77° F (25° C)		
20-hr. (9.50A)	190 Ah		
10-hr. (17.6A)	176 Ah		
5-hr. (32.3A)	161 Ah		
1-hr. (114A)	114 Ah		
<b>Approximate Weight</b>	80 lbs (36.3 kgs)		
<b>Internal Resistance (approx.)</b>	2.2 mΩ		
<b>Shelf Life</b> (% of normal capacity at 68° F (20° C)			
3 Months	6 Months	12 Months	
91%	83%	64%	
<b>Temperature Dependency of Capacity</b>			
104° F	77° F	32° F	5° F
102%	100%	85%	65%
<b>AGM Operational Temperature</b>			
Charge	32° F to 104° F (0° C to 40° C)		
Discharge	5° F to 113° F (-15° C to 45° C)		
<b>AGM Storage Temperature</b>	5° F to 104° F (-15° C to 40° C)		



**Charge Method** (Constant Voltage)

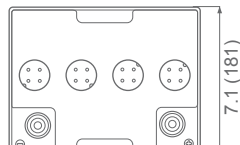
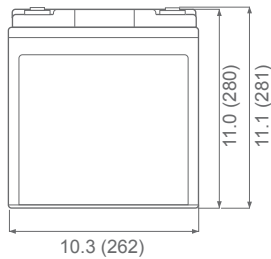
**Cycle Use** (Repeating Use)

Initial Current	57A or smaller
Control Voltage	9.73-9.87 VDC

**Float Use**

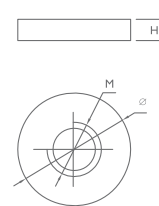
Control Voltage	9.07-9.20 VDC
-----------------	---------------

### Physical Dimensions: in (mm)



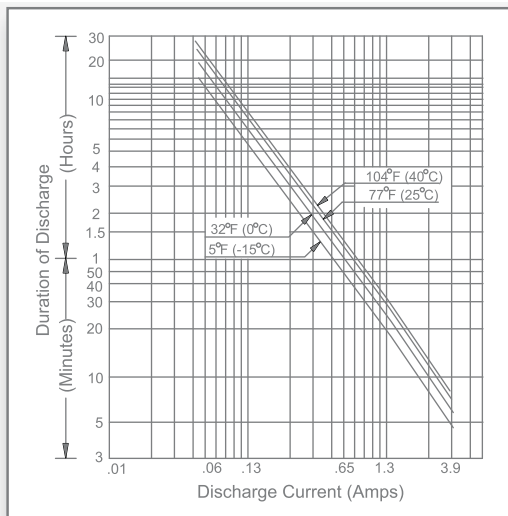
**L:** 10.3 in (262 mm)  
**W:** 7.1 in (181 mm)  
**H:** 11.0 in (280 mm)  
**TH:** 11.1 in (281 mm)  
 Tolerances are +/- 0.04 in. (+/- 1mm) and +/- 0.08 in. (+/- 2mm) for height dimensions. All data subject to change without notice.

### Terminals

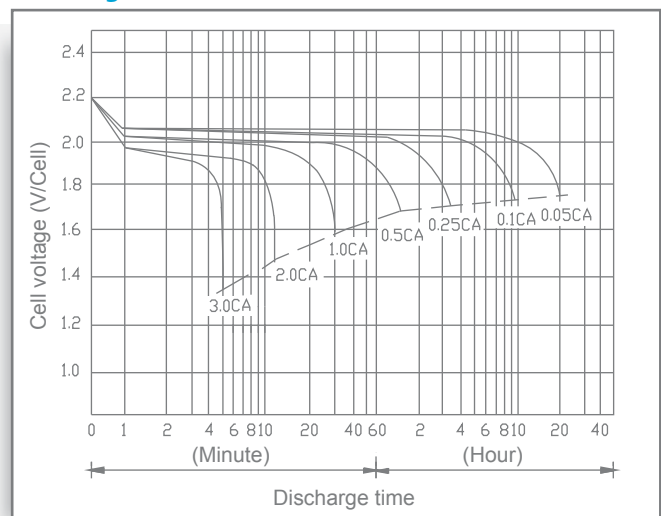


Dimension	M	∅	H
Type I8	10.0 mm 0.39 in	19.0 mm 0.75 in	2.00 mm 0.08 in

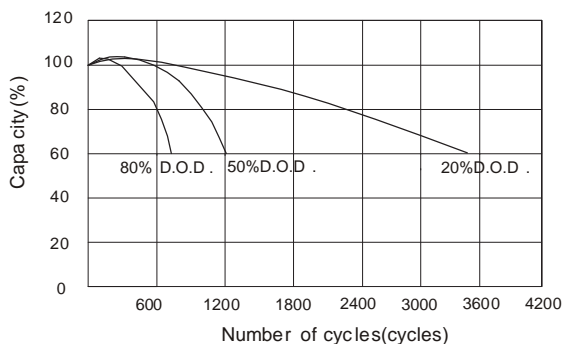
### Discharge Time vs. Discharge Current



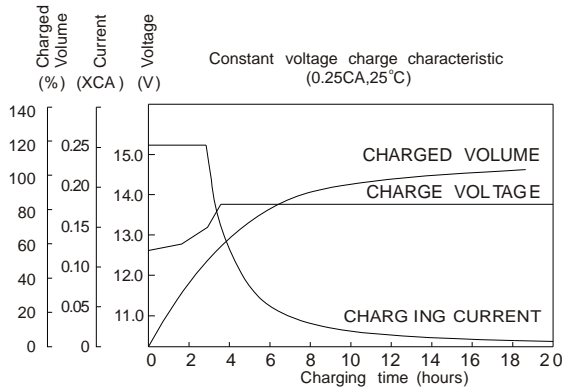
### Discharge Characteristics



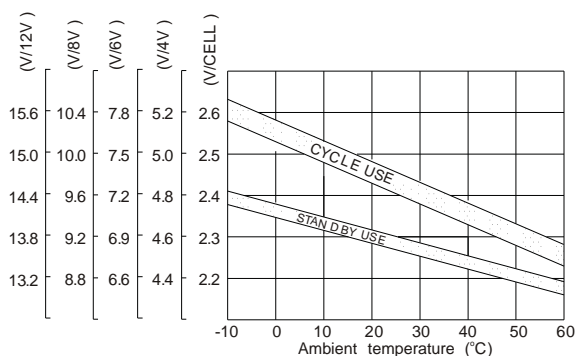
### CYCLE SERVICE LIFE IN RELATION TO DEPTH OF DISCHARGE



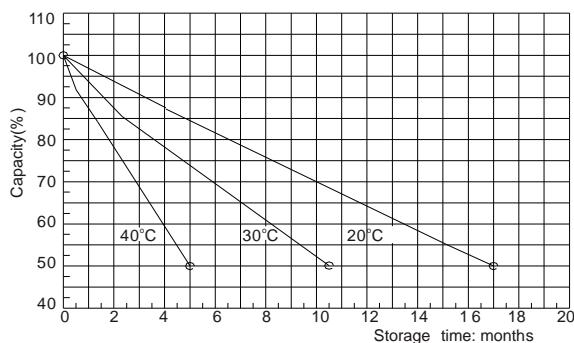
### CHARGE CHARACTERISTIC CURVE



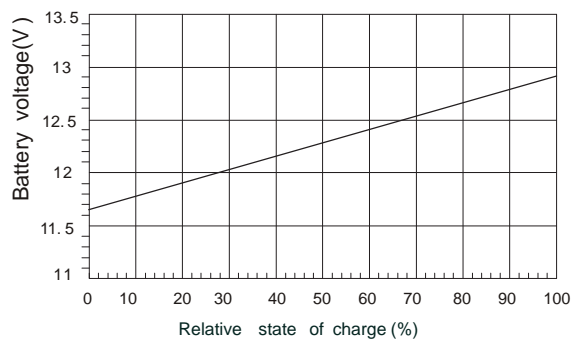
### RELATIONSHIP BETWEEN CHARGING VOLTAGE AND TEMPERATURE



### SELF-DISCHARGE CHARACTERISTIC



### RELATIONSHIP OF OCV AND STATE OF CHARGE (25°C)



### TEMPERATURE EFFECTS ON CAPACITY

